

# Voices You Have Heard

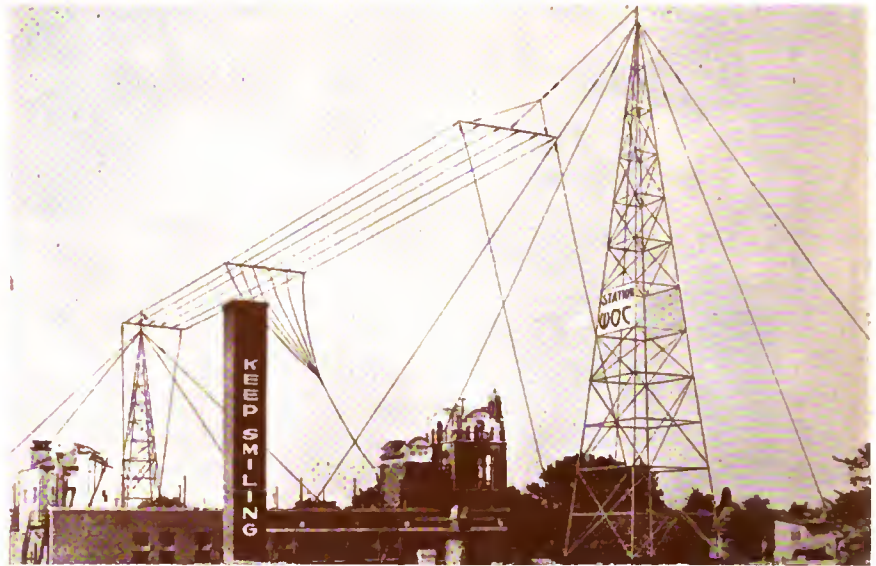
Announcers, Artist and Studios



Announcer BWS  
(Stanley W. Barnett)  
of WOC, Davenport



KFI, the station of Earle C. Anthony, Inc., at Los Angeles, is operated by the tall young man seen in the photo, A. MacDonald, who has to handle also the remote control programs from the studios of two local newspapers and a hotel, and incidentally an organization comprising sixty-one musical organizations which furnish programs for the good of the community



Flood lighting makes these towers visible at night for miles, for this antenna system marks the highest point in the Tri-Cities, 300 feet above the Mississippi



When George S. Neill speaks into the microphone at KFI the studio and George S. take on the appearance above, enhanced more than a little, incidentally, by the presence of Esther Ritter, at the piano. A slogan that runs: "Their line is gone out through all the earth and their words to the end of the earth," and the electric chimes which open and close the program are familiar features of this Los Angeles station